

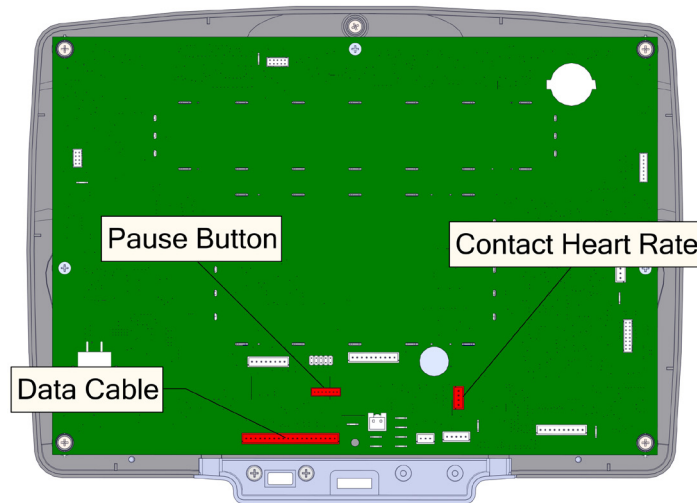
Service Bulletin

D-1 Console Cable Connections

Applies to: D-1 Consoles



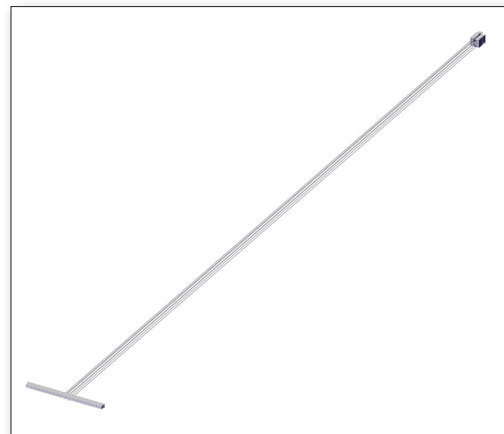
There are 3 connections that need to be made from the stepmill frame when installing a D1 console, this CSB identifies the locations. The cables are considered part of the frame and are not in the D1 box.



D1 Console PCB

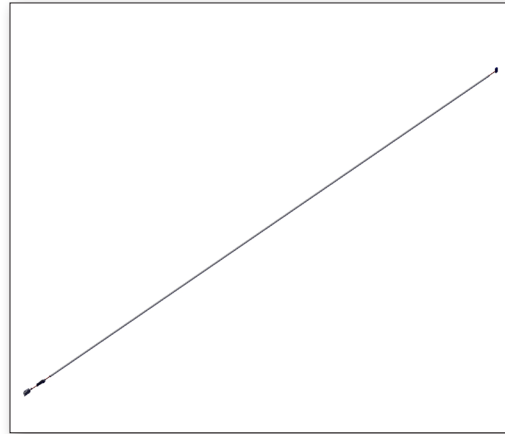
Connections

1. Data Cable
Part Number: [050-0161](#)

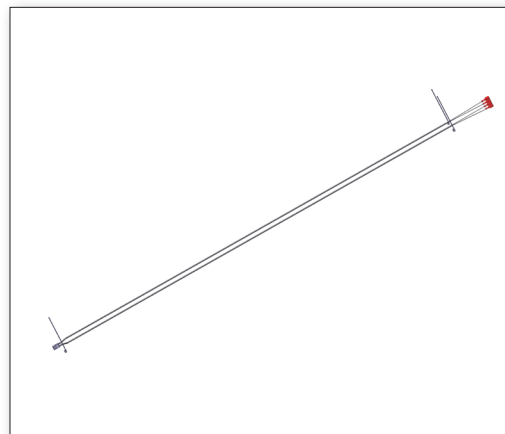


Service Bulletin

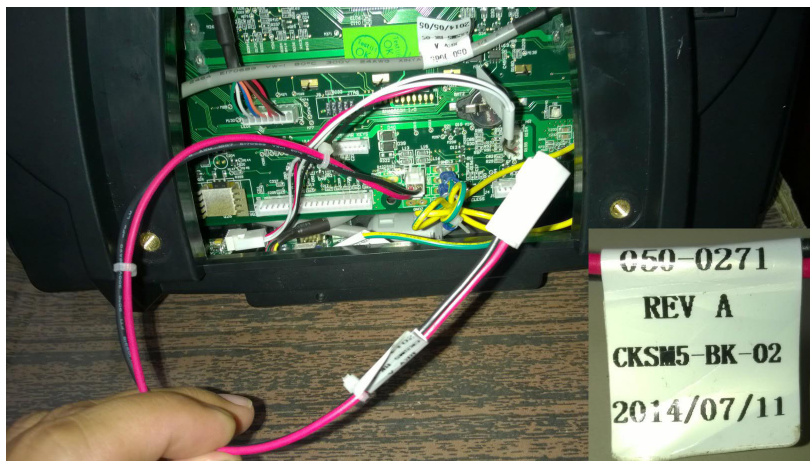
- 2. Pause Button
Part Number: [711-3350-KT](#)



- 3. Contact Heart Rate
Part Number: [050-0324](#)



Attention: If a **green cable** labeled 050-0271 is present, do not connect. Remove this **green cable** from the D1 console and discard.



Green Cable 050-0271